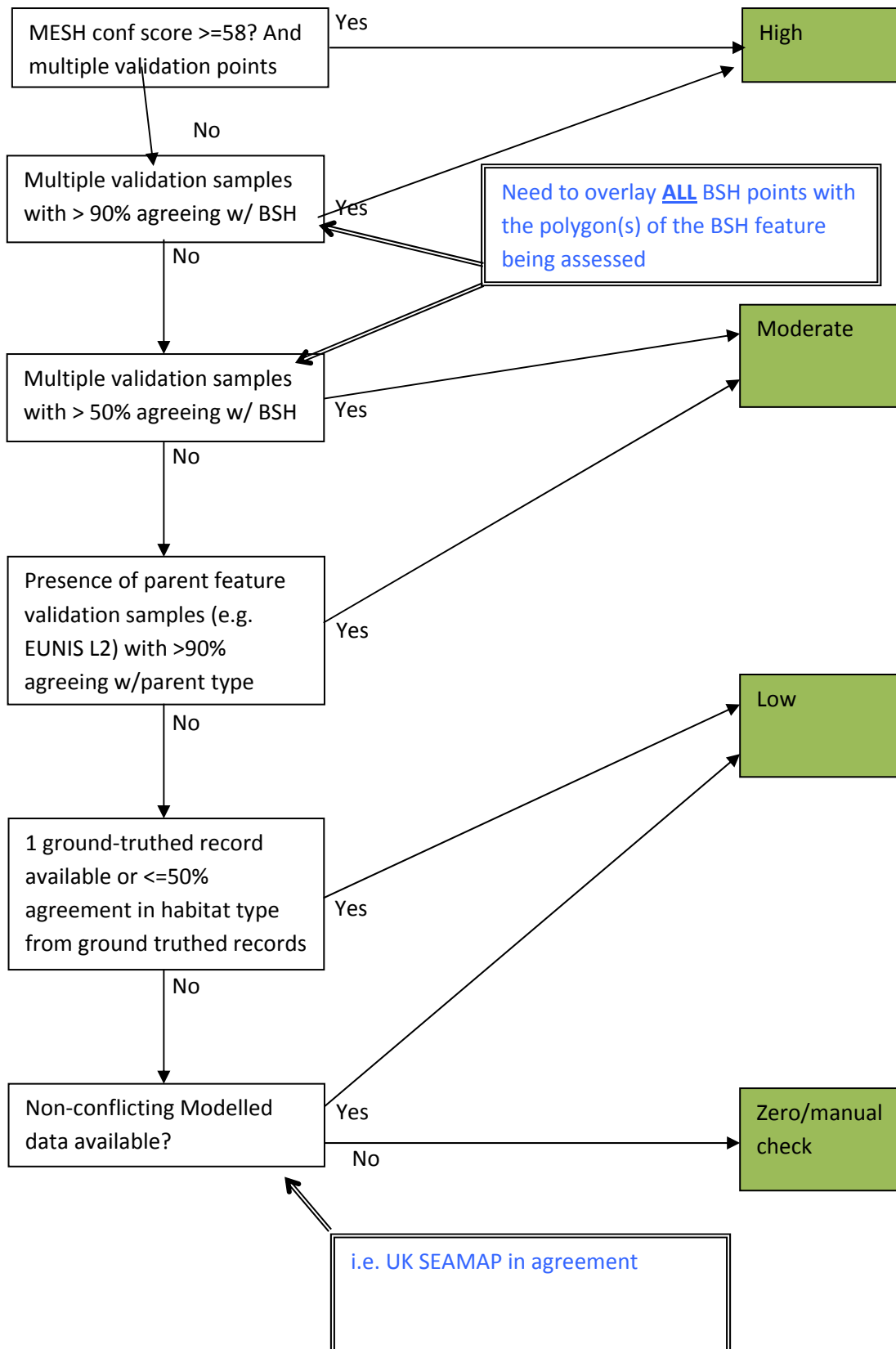


BSH presence. Amended (05-03-2012, TM)

1) Is there a habitat map from surveyed data? 2) Does it have an assigned confidence score (derived using the MESH protocol)?



BSH Extent

HIGH

Habitat map with mesh score of ≥ 58 and multiple validation points distributed over more than 50% of the feature polygon(s).

Or

Modelled map with multiple validation points distributed over more than 50% of the feature polygon(s).

MEDIUM

Habitat map with mesh score of ≥ 58 and multiple validation points not distributed over more than 50% of the feature polygon(s).

Or

Modelled map with multiple validation points not distributed over more than 50% of the feature polygon(s).

LOW

Modelled map with no validation points.

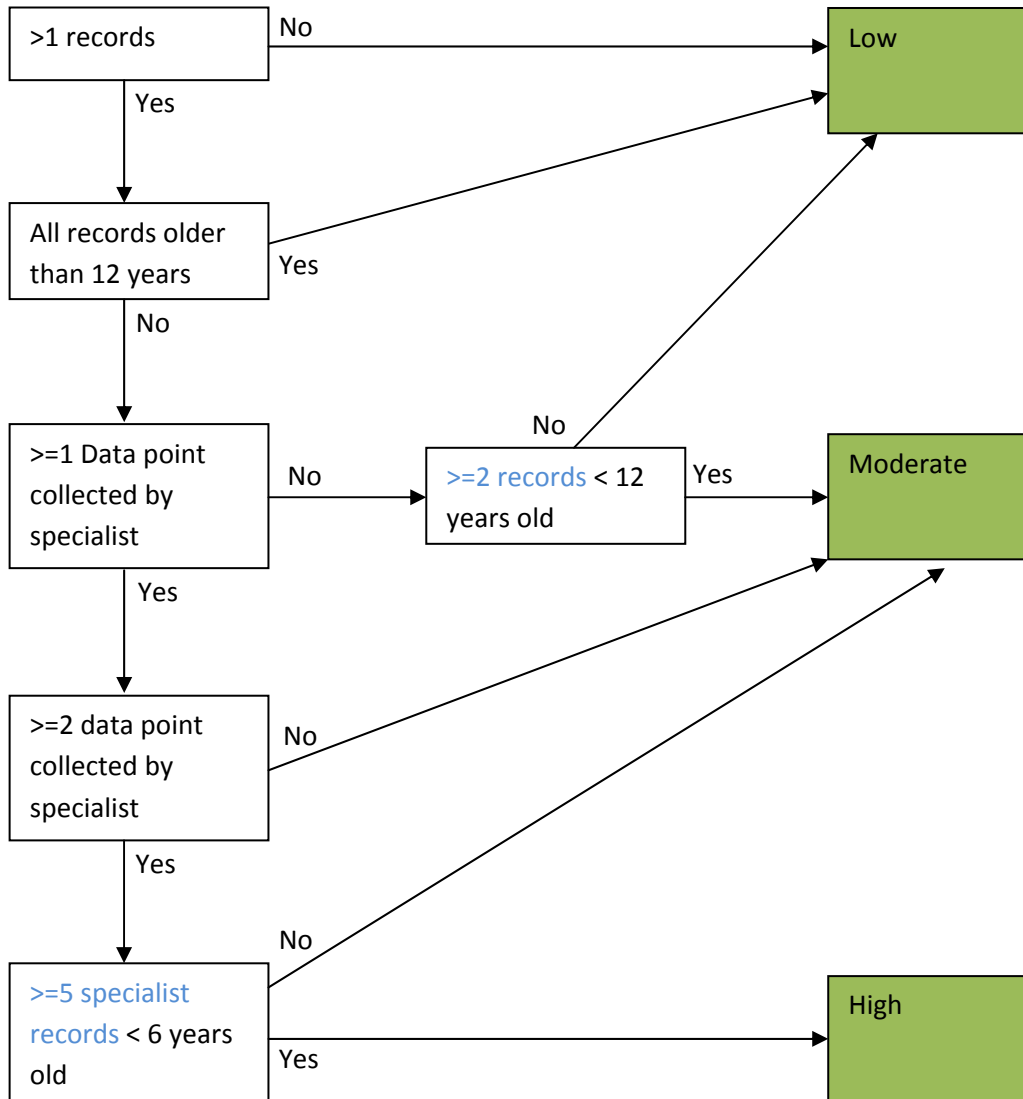
Or

Habitat map with mesh score of ≥ 58 and no validation points.

Or

Only point data available.

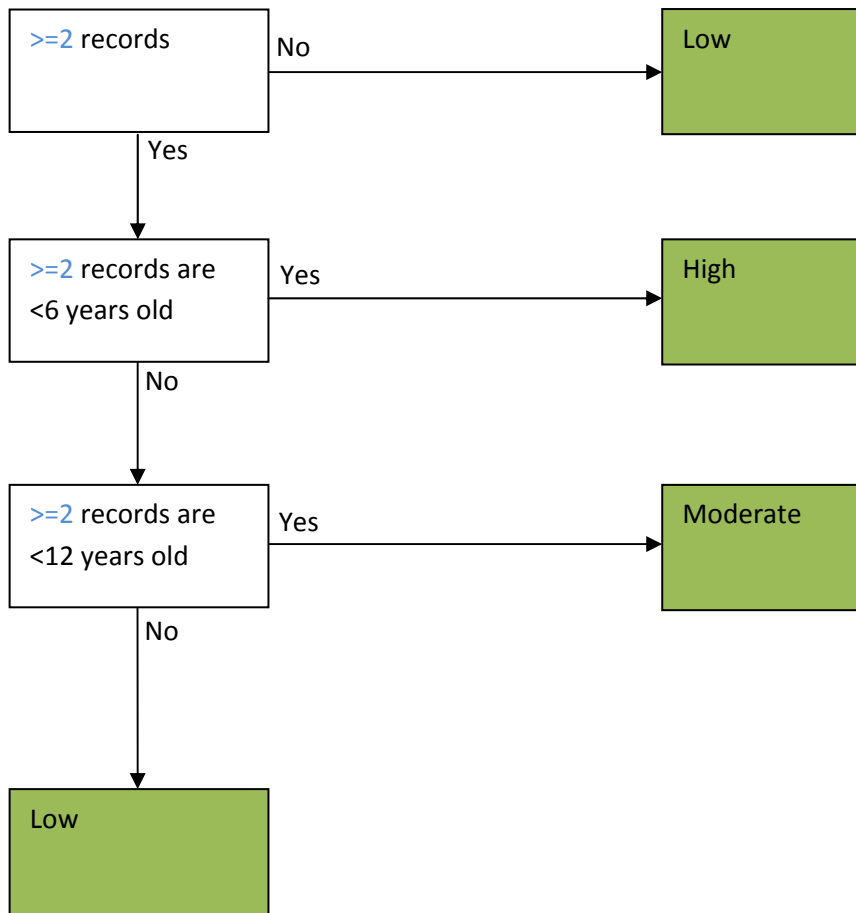
Species presence. Amended (05-03-2012, TM)



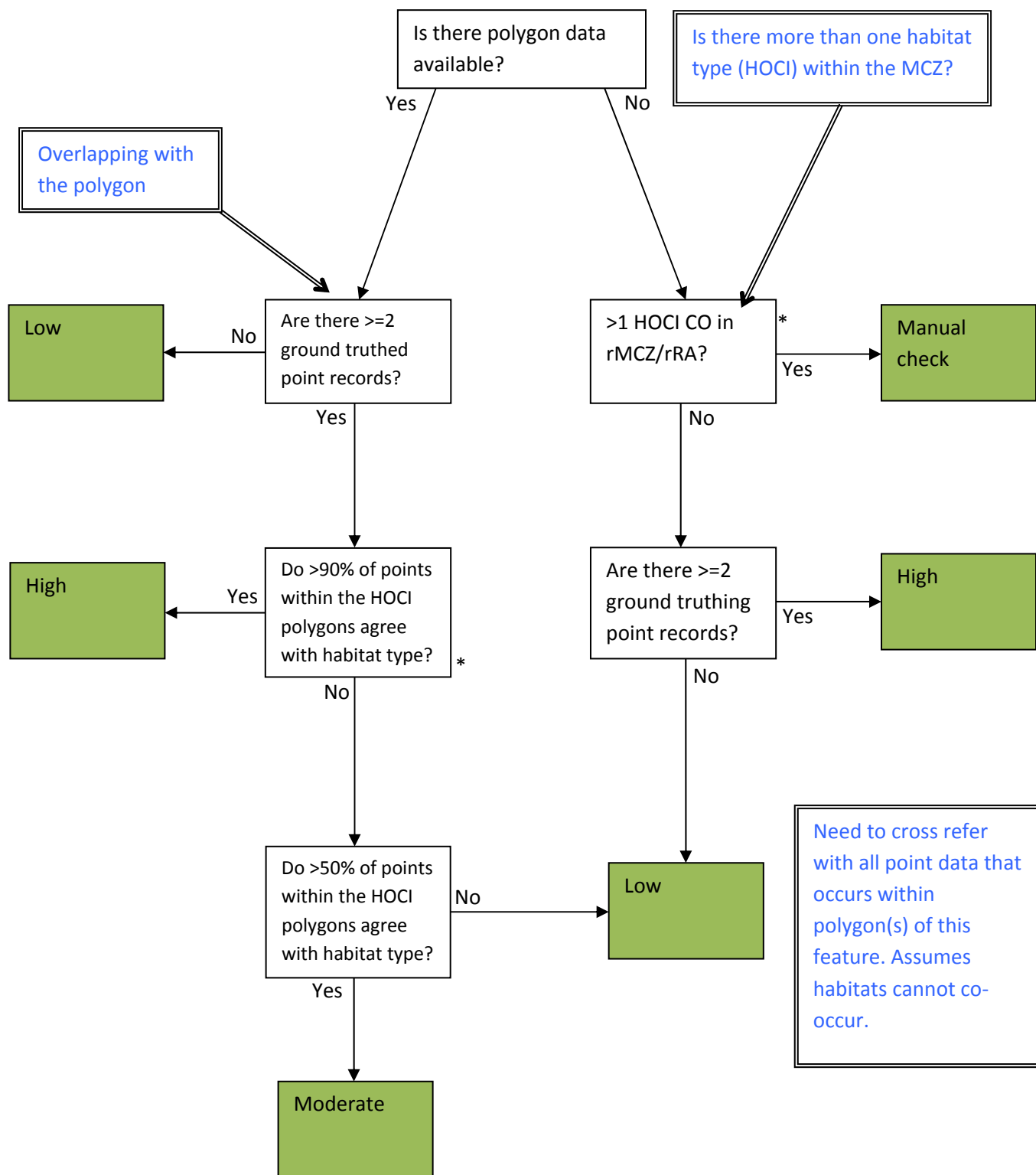
Standardised list of specialists provided by JNCC/NE.

<1pt = No score & make note of this in column E of evidence review spreadsheets.

Species Extent. Amended (20-03-2012, TM)



HOCl presence (habitats with low temporal variability). Amended (02-03-2012, TM)

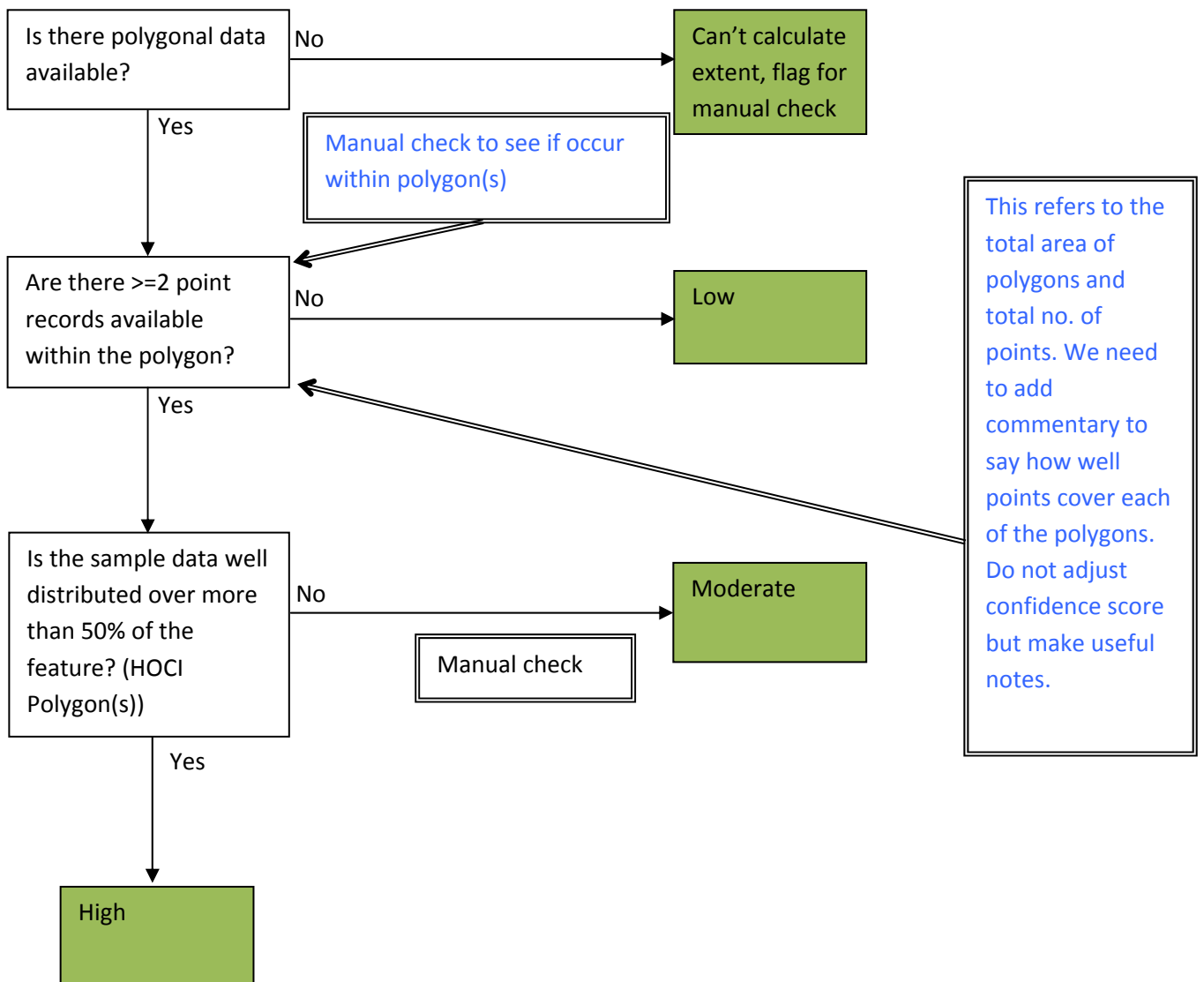


Need to cross refer with all point data that occurs within polygon(s) of this feature. Assumes habitats cannot co-occur.

Exceptions (See page 11 of protocol E, need to factor in age of data sources):

- Blue mussel intertidal beds on mixed and sandy sediments, Native oyster, Honeycomb worm (*Sabellaria alveolata*) reefs, Ross worm (*Sabellaria spinulosa*) reefs, Seagrass beds.

HOCI Extent (habitats with low temporal variability). Amended (07-03-2012, TM)



****Note: Some exceptions apply as per presence****